



PTFE LINED BUTTERFLY VALVE

Swiss quality and reliability, essential for
hazardous applications



KLINGER BRINGS PRODUCTION PROCESSES TO A HIGHER LEVEL

Production processes are the heart of the manufacturing industry. That's exactly where KLINGER'S strength lies. With years of experience in the manufacturing industry, KLINGER has the knowledge and practical experience you'll need.

As a supplier of service, knowledge and solid advice, we are a reliable partner offering high quality products. Smart choices and well-thought-out, high-quality products form the basis of long-term solutions.

We are a partner in the broadest sense of the word, which means that we are of value at all levels of your organisation. We deliver services tailored to your needs, realise cost savings that take production processes to a higher level and decrease the dangers your employees are exposed to in the workplace!



**Plastic Moulded Lug Type
KP-1012**



**Metal Wafer Type
KP-1015**



CHEMVALVE BUTTERFLY VALVES

For shut off or control applications of corrosive fluids, abrasive medias, slurries or powders. Successfully proven in many industries such as chemical, pharmaceutical, food and mining.

FEATURES

SECURE & LEAKAGE-FREE

- » Designed for operation with highly aggressive media.
- » Sealing system proven and perfected over decades.
- » Superior performance with technically sophisticated components.

LONG LASTING & ECONOMICAL

- » Increased operational lifespan due to the ball-shaped construction of the sealing surfaces of the disc and liner.
- » The rounded and polished disc minimises torque and allows the use of smaller, more economical actuators.
- » Complex-shaped back-up rings lengthen the operational life of the valve.

The company ChemValve is the most innovative PTFE valve manufacturer in Europe - professional and family-run. They have been a source of expertise for the development, production, testing and distribution of valves for over 25 years. The products of ChemValve are continually improved using the latest technology. All valves are engineered in Switzerland to provide secure transmission of aggressive media.

ADDITIONAL FEATURES

- » Modified PTFE significantly improves durability when dealing with chlorine, hydrogen fluoride, high temperatures and other severe applications.
- » Guaranteed compatibility with all established actuator systems through a range of shaft mounting options.

UNIQUE

- » Adaptable to different industries thanks to it's modular design.
- » Individual serial numbers provide complete traceability of all pressurised and pressure-bearing parts.
- » Continually developed in collaboration with our customers.

>> Metal Lug Type KP-1016



>> Stainless Steel KP-1015



ChemValve also complies with EN1935/2004 Food Grade and FDA



TECHNICAL DATA



NOMINAL DIAMETERS:

DN 25-1200 / 1"-48"



FLANGE CONNECTIONS:

» EN 1092-1, PN 10-16
» ASME B16.5, Class 150
» JIS 10K



MAXIMUM WORKING PRESSURE:

» DN 25-450: 10 bar
» DN 500-600: 6 bar
» DN 650-1200: 3 bar



TEMPERATURE RANGE:

» -20°C to 200°C



FACE-TO-FACE LENGTH:

» EN 558, Series 20



DISK MATERIALS:

» PFA
» PFAc, Conductive PFA
» Stainless Steel, 1.4404
» Duplex, 1.4462, 1.4469
» Titanium Grade 2, 3.7035
» Hastelloy C, 2.4602, 2.4819



LINER MATERIALS:

» PTFE
» Modified PTFE
» Modified & Conductive PTFE
» UHMPE



BACKUP MATERIALS:

» Silicone
» EPDM
» FKM



BODY MATERIALS:

» Ductile Iron (EN-JS1049)
» Stainless Steel (1.4404)
» Carbon Steel (S355J2)
» Plastic (VE-CF)



CONFORMITY:

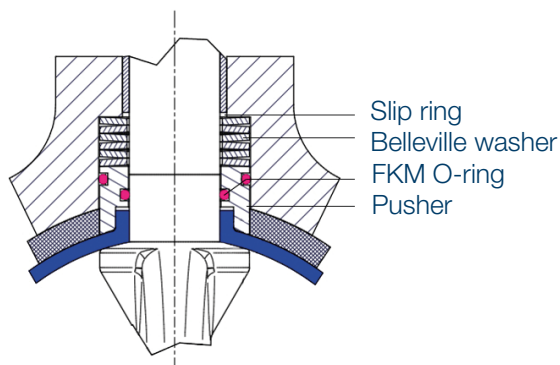
» PED 2014/68/EU
» ATEX 2014/34/EU
» Food (EC) Nr. 1935/2004, FDA
» TA-Luft, ISO 15848-1



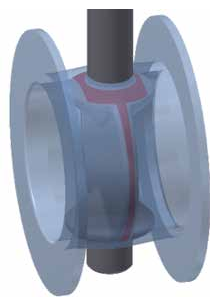
PRESSURE TEST:

» EN 12266-1

TECHNICAL FEATURES



The rib of the pusher pinches the PTFE liner and helps to avoid a hydrostatic lifting of the pusher.



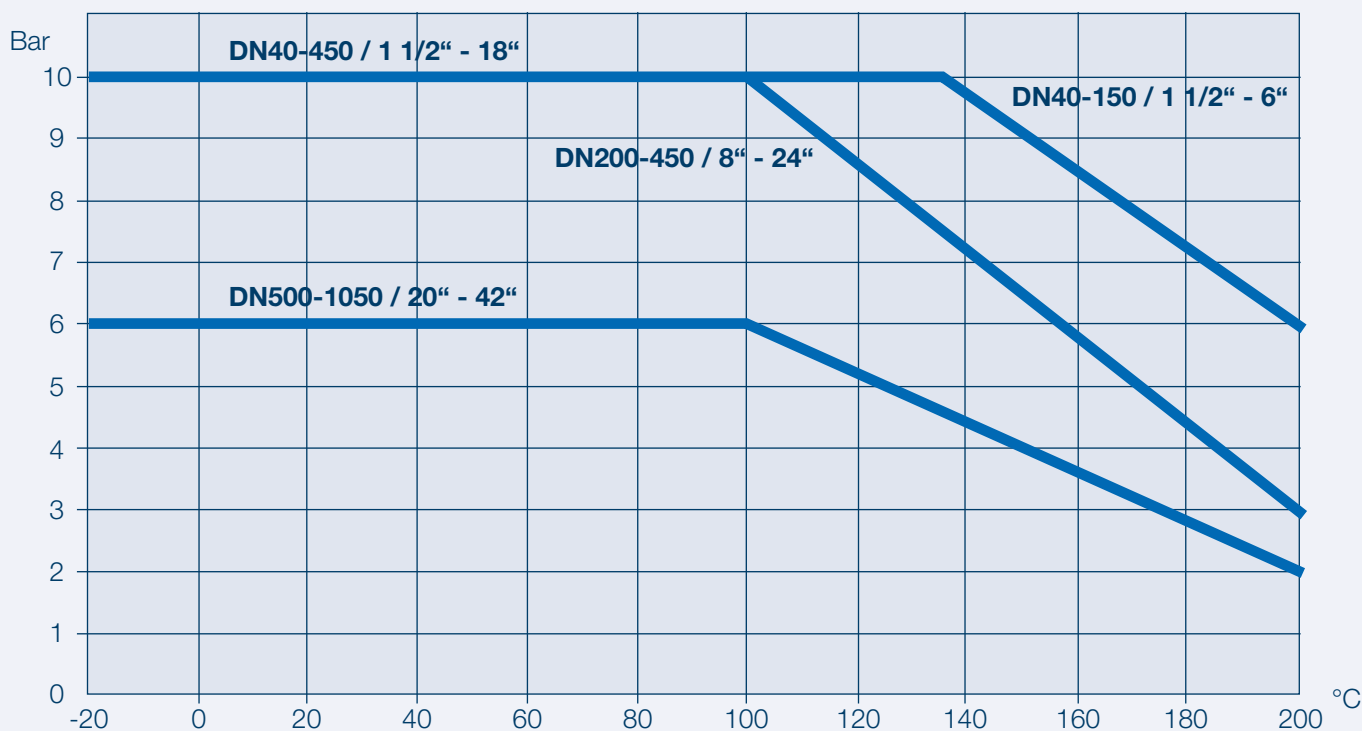
Perfect shapening for a fully tight valve over a long lifetime!



The use of multiple belleville spring washers guarantees a steady pressure even after a certain wearout of the liner due to disc transition.

PT DIAGRAM CHEMVALVE TYPE KP-1015 & KP-1016

PRESSURE-TEMPERATURE-DIAGRAM



AUTOMATION CHEMVALVE BUTTERFLY VALVES: KP-1012 / 1015 / 1016

ASSEMBLY: ACTUATOR, MOUNTING FLANGE AND ADAPTER

Suited for all automated applications

- » Standardised Air Torque pneumatic actuators
- » High corrosion protection due to extra PTFE Coating and Stainless Steel shaft and bolts
- » Two sided adjustable stroke limitation
- » Actuators selected with 6 bar instrument pressure
- » Extremely durable

KLINGER The Netherlands

Nikkelstraat 2
3067 GR Rotterdam
info@klinger.nl
T +31 (0)10 455 75 55

KLINGER Service Center Limburg

Business Park Stein 208A
6181 MB Elsloo
limburg@klinger.nl
T +31 (0)46 7600 600

www.klinger.nl